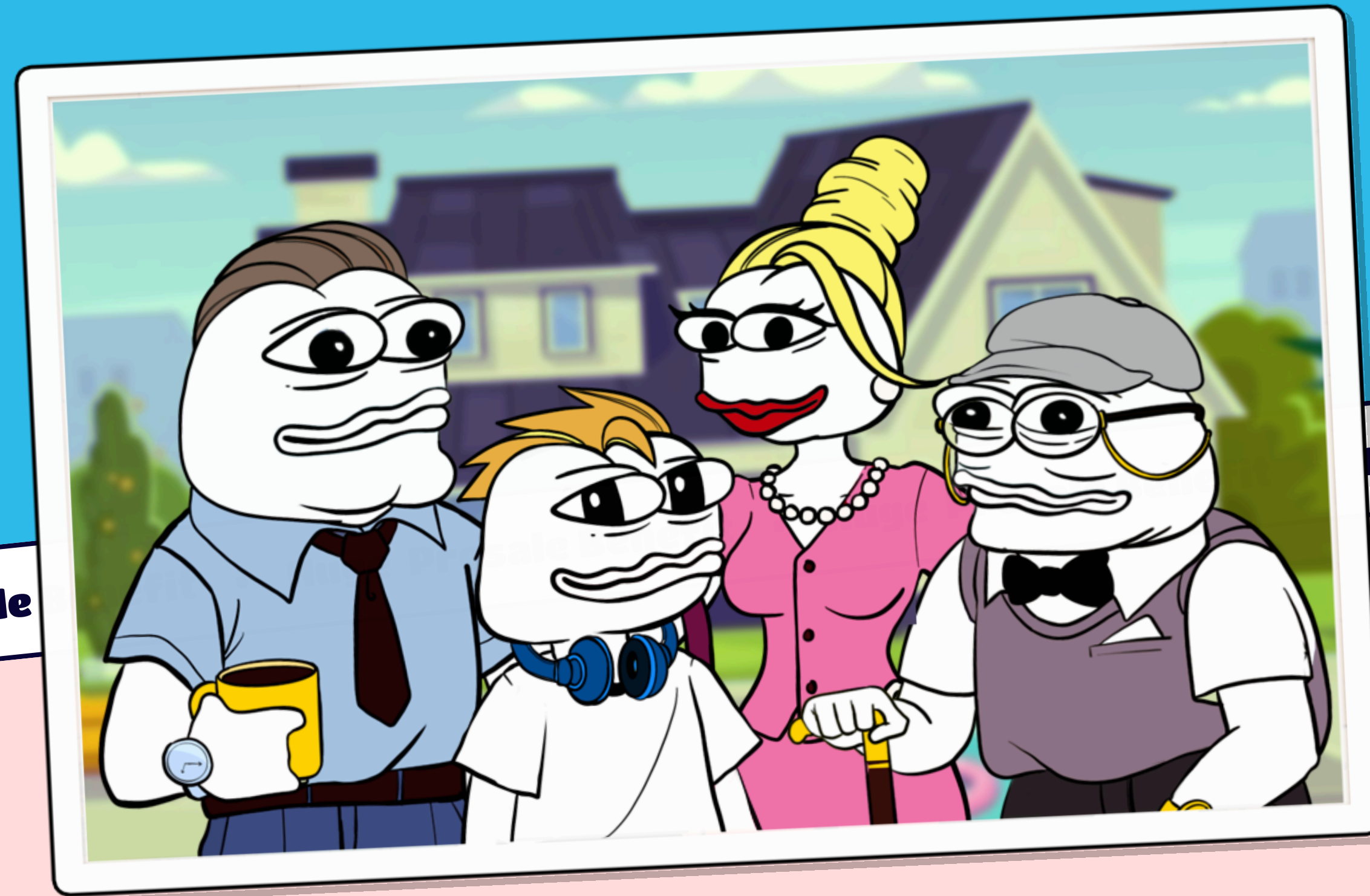




Whitepaper

TON Layer 2 - The Future of TON



• Huge Presale Benefit • Huge Presale

Huge Presale Benefit • Huge Presale Ben



Introduction

The TON ecosystem's full potential will be unlocked by PEHE, the next advancement in blockchain technology.

Discover unparalleled scalability and a network that is future-proof and designed to expand TON's capabilities.

Problem & Opportunity

The Problem

The Issue Congestion: When traffic is heavy, TON's performance is constrained, resulting in network bottlenecks and outages.

Scalability Limits: In order to satisfy the demands of an ecosystem that is always expanding, TON must scale.

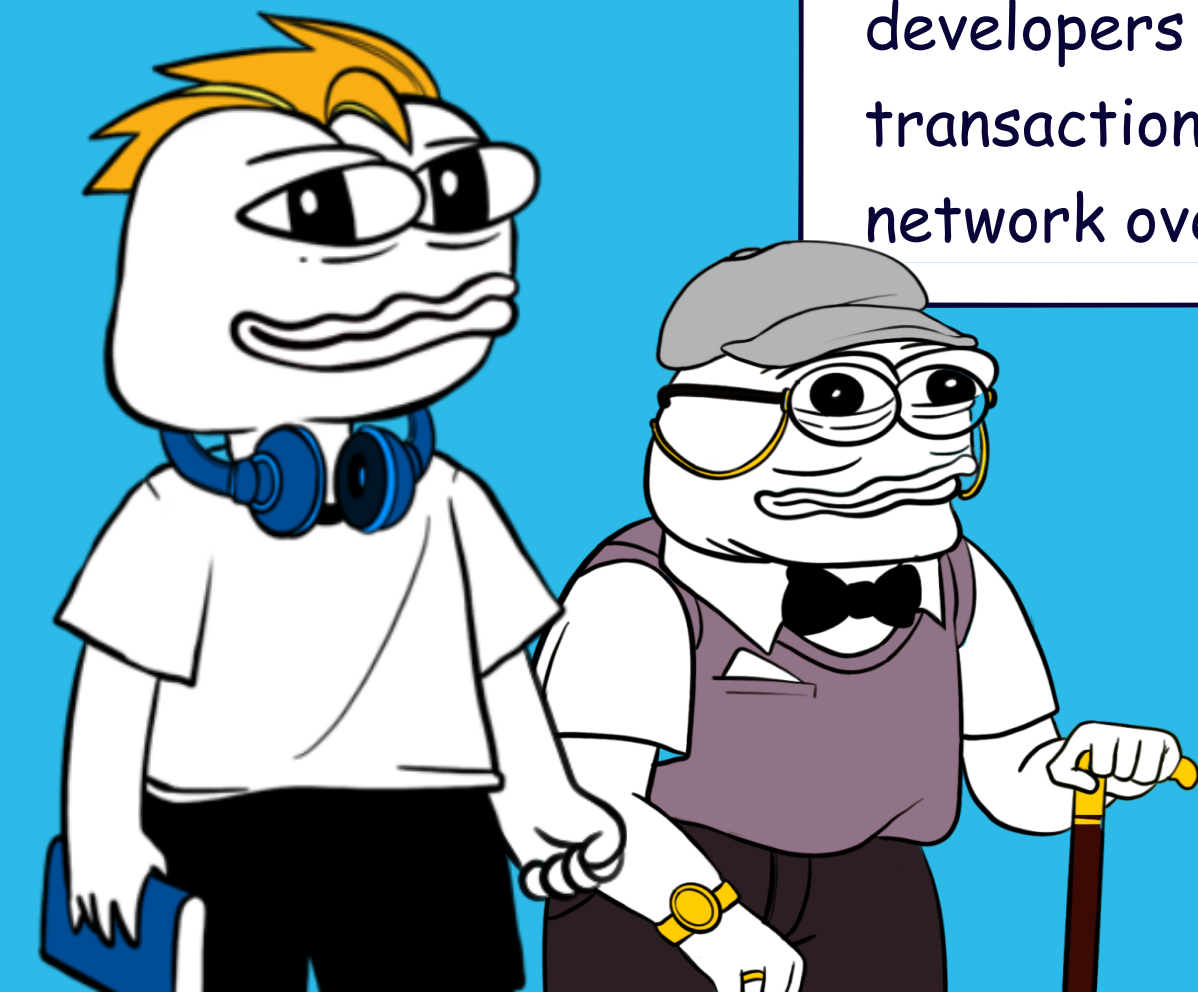
Limited Uses for Ecosystems: Users and developers find it frustrating when transactions are executed unreliably due to network overload.

Opportunity

Layer 2 Scalability: PEHE improves scalability by utilizing advanced Layer 2 solutions that optimize transaction throughput, reducing congestion on the main chain.

Cost Reduction: By processing transactions off-chain and settling them on-chain in batches, making it more accessible for users and applications.

Integration and Use Cases: PEHE's unique bridge between Ethereum and TON unlocks a variety of use cases, from decentralized applications to DeFi solutions



PEHE Feature



Infinite Scale

High volume trading is made possible by PEHE's customisability and transaction bundling, which also make it infinitely scalable and guarantee a remarkable meme coin experience.



PEHE Multi-chain

Enjoy smooth performance with our TON Layer 2, designed for speed and scalability. This will enable \$PEHE to access both networks, providing the security of Ethereum alongside the meme strength of TON.

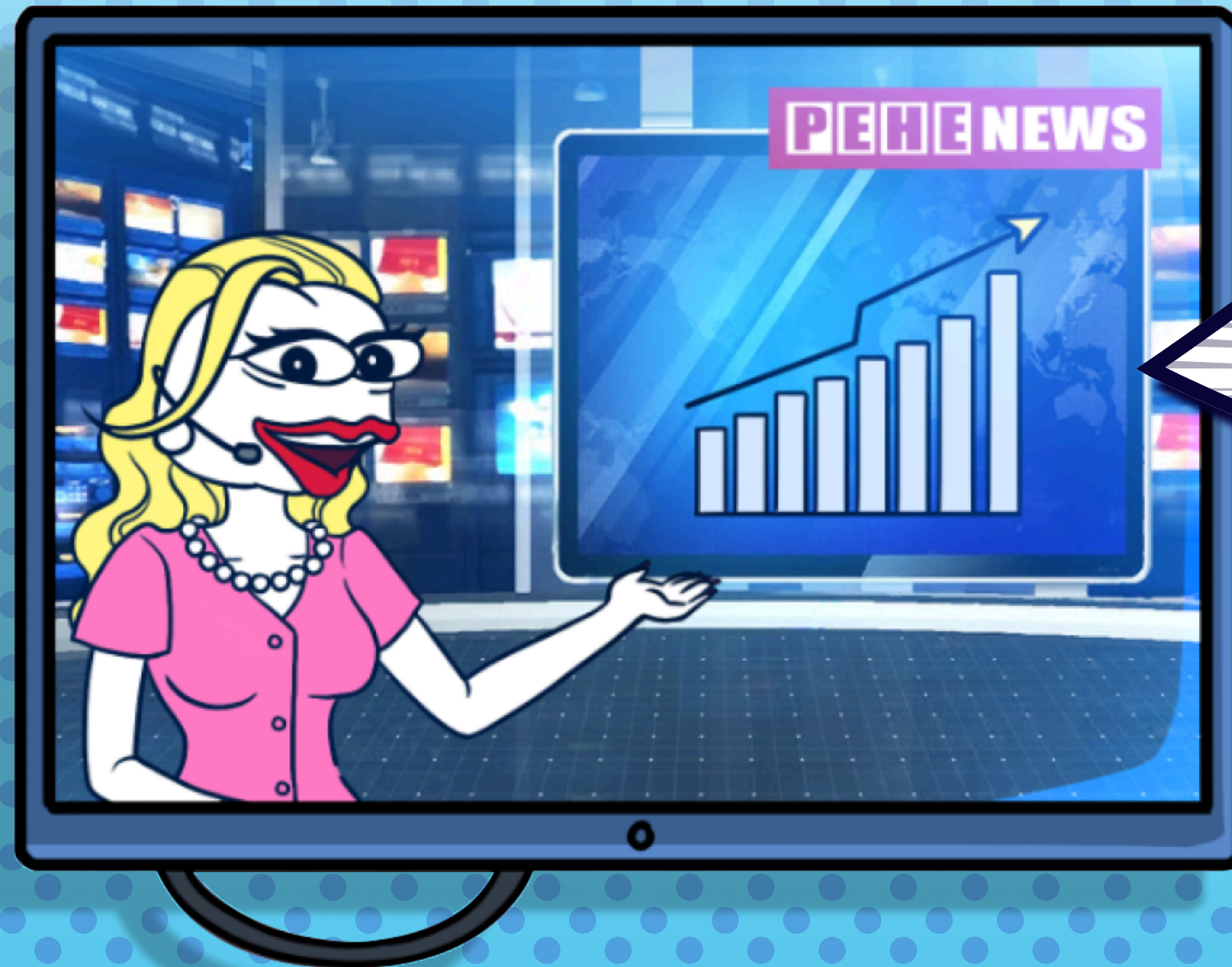


No Downtime

TON has frequently encountered problems like unsuccessful transactions, network congestion, and even outages during times of high activity. That problem is resolved by PEHE's off-chain execution and scalability.



Presale



BUY NOW

Introduction

Early adopters have the opportunity to buy tokens at the lowest price during the \$PEHE presale, with price rises occurring incrementally at each stage. Participants can lock their tokens during the presale to obtain additional benefits through staking.

Token Generation Event (TGE)

Following the presale, both centralised and decentralised exchanges will list \$PEHE. At launch, presale purchases and staked tokens will be refundable.



LISTEN UP, KIDS!
THE PEHE ROADMAP ISN'T
JUST A PLAN. IT'S OUR
FAMILY LEGACY.

Roadmap

Phase 1: Pre-sale procedure

The current presale process enables buyers to acquire PEHE tokens before they are listed, guaranteeing the most affordable price available. With every stage of the presale, the cost goes up. For those who participated in the presale, staking presents an opportunity to enhance their returns.

Phase 2: \$PEHE TGE & Listings

The anticipation has finally come to an end—the community arrives on international trading platforms. \$PEHE has officially launched for public trading.

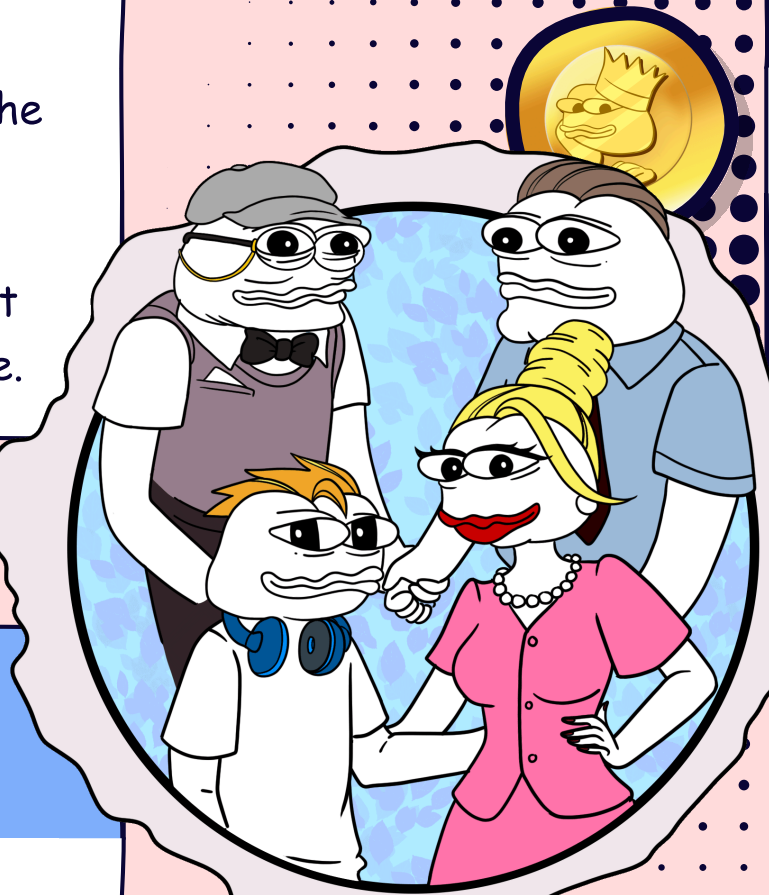
Phase 3: PEHE Expansion

PEHE's Layer 2 will officially launch, marking a groundbreaking step for TON! It augments the capabilities of TON by increasing its scalability as the volume increases, rendering it the transparent solution to propel the ecosystem into the future.

Tokenomics

40% Presale

40% of the total supply will be designated for the presale phase, guaranteeing sufficient liquidity and engagement to kick off the initiative.



20% Marketing

20% will focus on promotional strategies, encompassing collaborations with influencers, social media initiatives, and extensive campaigns to encourage widespread acceptance.

10% Community Reward

10% is set aside for our community! Dedicated members can stake their \$PEHE tokens or OG members earn some tasty rewards.

20% Project Development

A full 20% will be allocated for ongoing project development, ensuring that PEHE continues to evolve and improve post-launch.

10% Liquidity

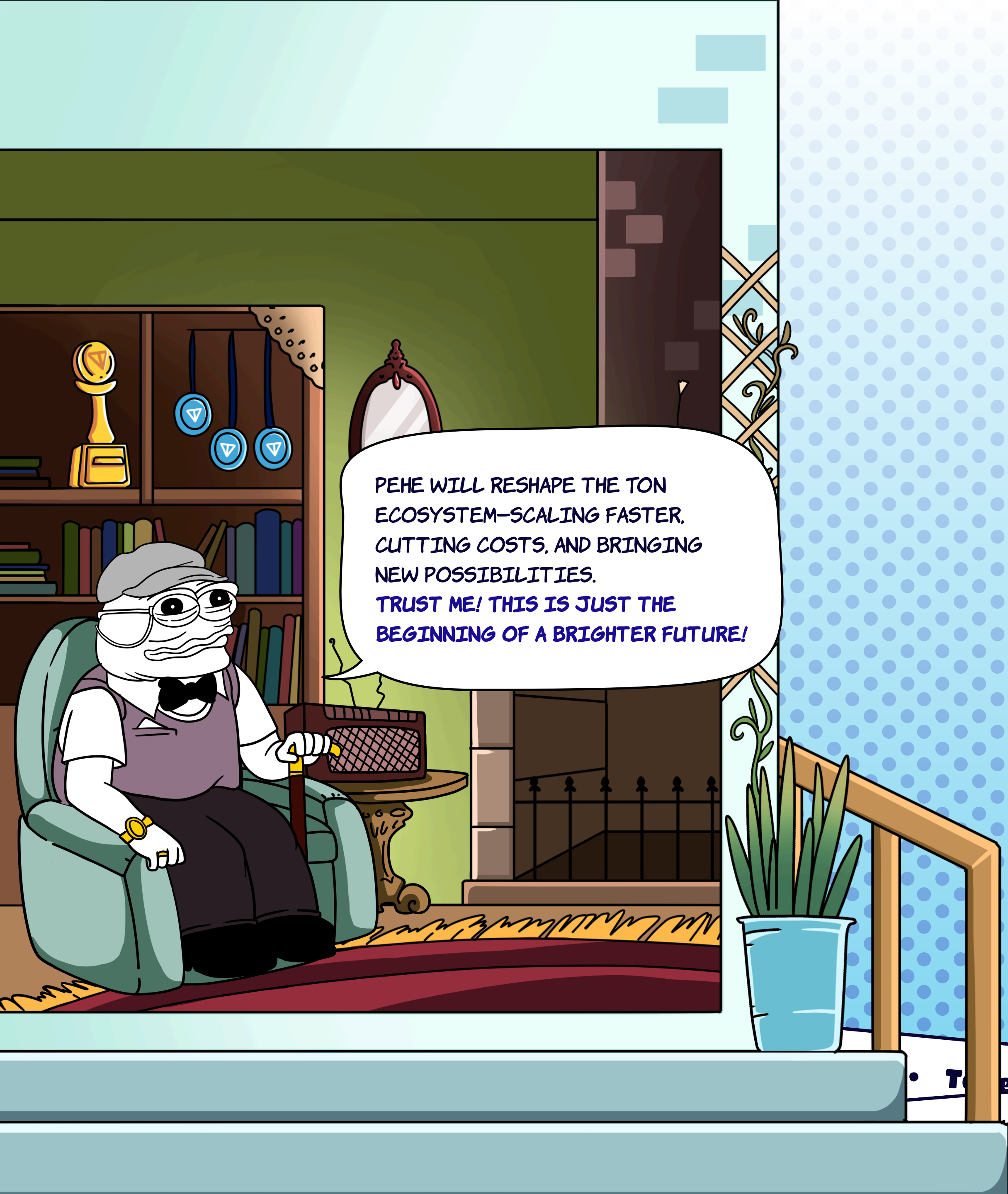
We've got 10% will be set aside to uphold robust liquidity across platforms, facilitating seamless trading and consistency.



Total Token Amount:
15,000,000,000

PEHE TOKENOMICS?
SIMPLE:
LIMITED SUPPLY, STAKING REWARDS, AND BURNS TO BOOST VALUE. \$PEHE ISN'T JUST A TOKEN; IT'S A POWER MOVE!





PEHE WILL RESHAPE THE TON ECOSYSTEM—SCALING FASTER, CUTTING COSTS, AND BRINGING NEW POSSIBILITIES. TRUST ME! THIS IS JUST THE BEGINNING OF A BRIGHTER FUTURE!

Conclusion

PEHE is set to become a **transformative force** in the PEHE ecosystem, enhancing its **scalability**, **reducing costs**, and unlocking **new applications** for a **broader audience**.

By creating a **powerful Layer 2 solution** that connects **TON and Ethereum**, PEHE is positioned to tap into PEHE's massive community and enable a new wave of utility and innovation.

Join the PEHE movement today and be part of the next evolution in the crypto landscape!

• Tokenom
Epic Yield • Epic Yield • Epic Yield • Epic Yield • Epic Yield • Tokenom
• The Next Generation of Crypto